

AC INDUCTION MOTOR DATA SHEET

Model No.or RFQ No.		Item No.		Rev. No. [0]			
Project Name		Project No.		Quantity sets			
GENERAL SPECIFICATION			PERFORMANCE DATA				
Frame Size	250S		Rated Output	75 kW 100 HP			
Type	HLP-75/2		Number of Poles	2			
Enclosure(Protection)	Totally Enclosed (IP55)		Rotor Type	Squirrel Cage			
Method of Cooling	IC411(FC)		Starting Method*	<input checked="" type="checkbox"/> D.O.L <input type="checkbox"/> Y- Δ			
Rated Frequency	60 Hz		Rated Voltage	440 V 380 V 220 V			
Number of Phases	3		Current	Full Load 115.6 A 133.8 A 231.1 A			
Insulation Class	<input checked="" type="checkbox"/> F <input type="checkbox"/> B <input type="checkbox"/> H		Locked-rotor**	760 % 760 % 760 %			
Temp. Rise at full load (by resistance method)			Efficiency				
at 1.0 S.F 80 deg. C			50% Load 92.0 %				
Motor Location	<input checked="" type="checkbox"/> Indoor <input type="checkbox"/> Outdoor		75% Load 94.1 %				
Altitude	Less than 1000 meter		100% Load 94.1 %				
Relative Humidity	Less than 80 %		Power Factor(p.u)				
Ambient Temp.	40 deg. C (Max.)		50% Load 0.875				
Duty Type	Continuous (S1)		75% Load 0.895				
Service Factor	1.15		100% Load 0.905				
Mounting	<input checked="" type="checkbox"/> B3 <input type="checkbox"/> B5 <input type="checkbox"/> V1 <input type="checkbox"/> B3/B5		Speed at Full Load 3570 r.p.m				
Bearing	Type	Anti-Friction	Torque				
	DE/N-DE	6313C3 / 6313C3	Full Load 20.5 kg·m				
	Lubricant	Grease(Gadus S2 V 100 2)	Locked-rotor** 130 %				
External Thrust	Not applicable		Breakdown** 230 %				
Coupling Method	<input checked="" type="checkbox"/> Direct <input type="checkbox"/> V-Belt		Moment of Inertia (J)				
Shaft Extension	<input checked="" type="checkbox"/> Single <input type="checkbox"/> Double		Load(Max.) 9.050 kg·m²				
Terminal	Main	<input type="checkbox"/> Steel <input checked="" type="checkbox"/> Cast Iron	Motor 1.053 kg·m²				
Box	Aux.	<input type="checkbox"/> Yes <input checked="" type="checkbox"/> No	Sound Pressure Level (No-load & mean value at 1m from motor)				
	Location	Refer to Outline Drawing	87 dB(A)				
Application			Vibration 2.2 mm/sec (r.m.s)				
Area classification	Non-Hazardous		Permissible number of				
Type of Ex-Protection	Not applicable		Cold 3 times				
Applicable Standard	KS,IEC, NEMA MG1 Part30(Vpeak)		Hot 2 times				
			Paint	Munsell No.	4.4PB5.5/5.6(VL-451)		
ACCESSORIES			SUBMITTAL DRAWING				
			Outline Dimension Drawing \ Motor Weight(Approx.)				
			B3 LM-T1251B3CL001 500 kg				
			B5 LM-T1250B5CL001 540 kg				
			V1 LM-T1250V1CL001 540 kg				
			B3/B5 LM-T1251B4CL001 520 kg				
			Main T-Box Ass'y 3M-016882				
SPARE PARTS			REMARK				
			Premium Efficiency				
			*. For use on PWM VFD 10:1VT, 3:1CT@1.0S.F&F Temp. rise				
			Date	DSND	CHKD	CHKD	APPD
			2015-09-05	R.G. KIM	-	O.J. KIM	S.H. GO

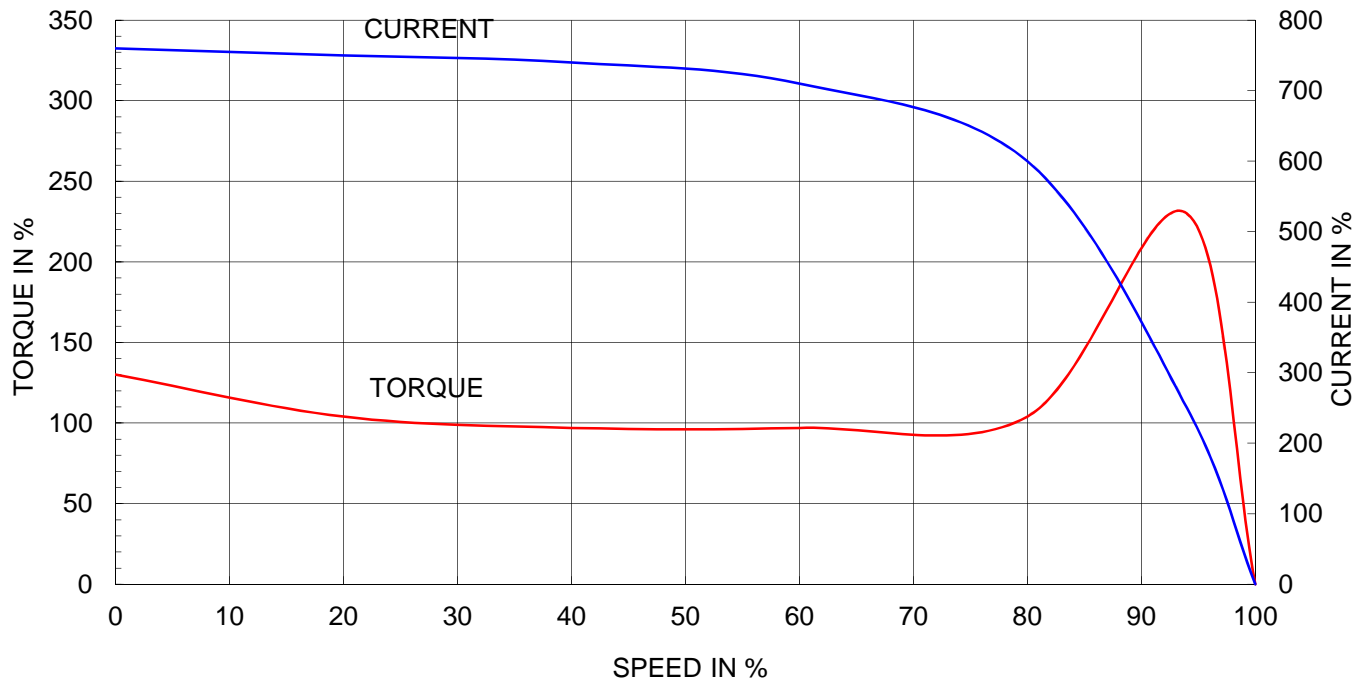
Note: Others not mentioned in this data sheet shall be in accordance with maker standard.
 Above technical data are only design values and shall be guaranteed with tolerance of applicable standard.
 Inspection and performance test shall be maker standard, if not mentioned.
 * In case of Inverter-Fed Motor, performance data is based on sine wave tests.
 ** Data is based on when the motor is supplied at rated voltage & frequency, and the data is expressed as a percentage of full-load value.

HHI W230-131-1 * In case of Inverter or V.V.V.F Motor:Performance data is based on sine wave tests. A4(210mm X 297mm)

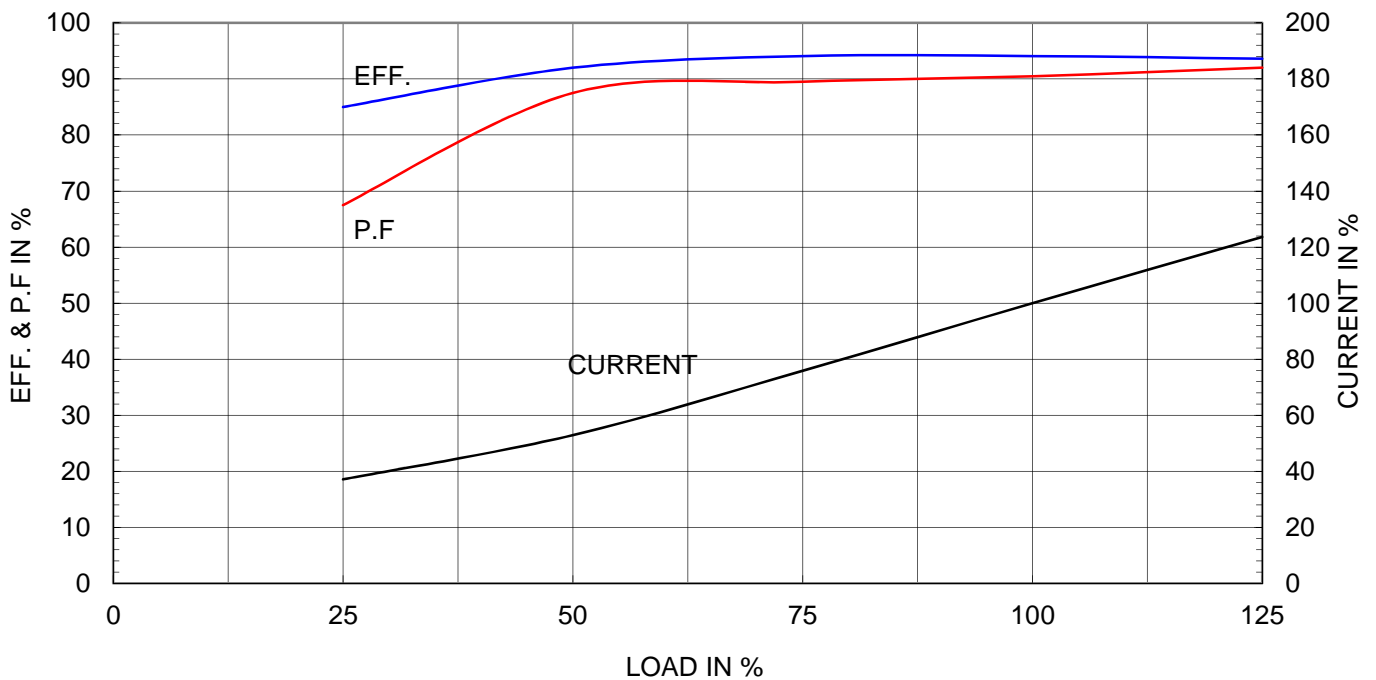
Type	:	HLP-75/2
Full Load Torque	:	20.5 Kg.m
Motor moment of Inertia (J)	:	1.053 Kg.m ²
Load moment of Inertia (J)	:	9.050 Kg.m ²


75 kW		2 P		60 Hz	
Speed at Full Load :				3570 RPM	
Rated Voltage	440V	380V	220V		
Full Load Current	115.6A	133.8A	231.1A		

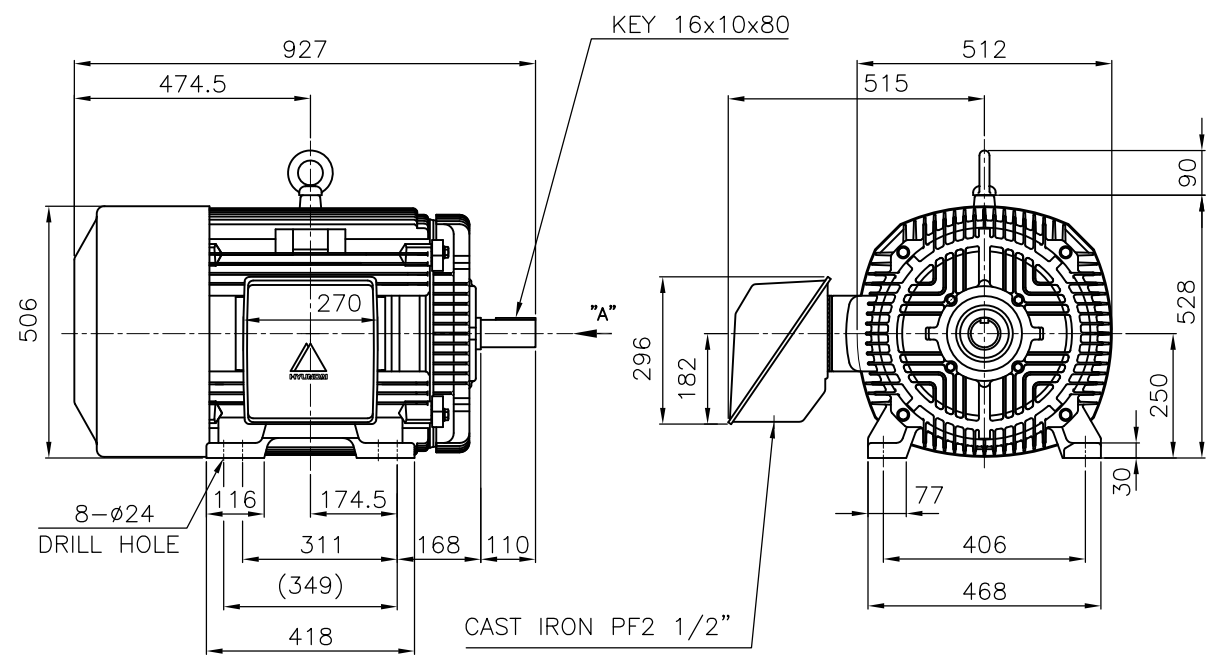
SPEED VS TORQUE & CURRENT CURVE



OUTPUT VS EFF., P.F & CURRENT CURVE



1	2	3	4
 HYUNDAI HEAVY INDUSTRIES CO., LTD.		TEFC THREE PHASE INDUCTION MOTOR	TYPE (1) TNB , TDB CAST IRON FRAME

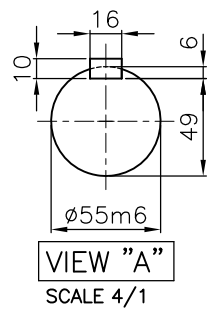


NOTE


1.TOLERANCE :

CENTER HEIGHT	250 ⁰ _{-0.5}
BASE HOLE	ø24 ^{+0.43} ₀
SHAFT DIAMETER	ø55 ^{+0.030} _{+0.011}
KEYWAY WIDTH	16 ^{-0.018} _{-0.061}
KEYWAY DEPTH	6 ^{+0.2} ₀
KEY WIDTH	16 ⁰ _{-0.043}
KEY HEIGHT	10 ⁰ _{-0.090}

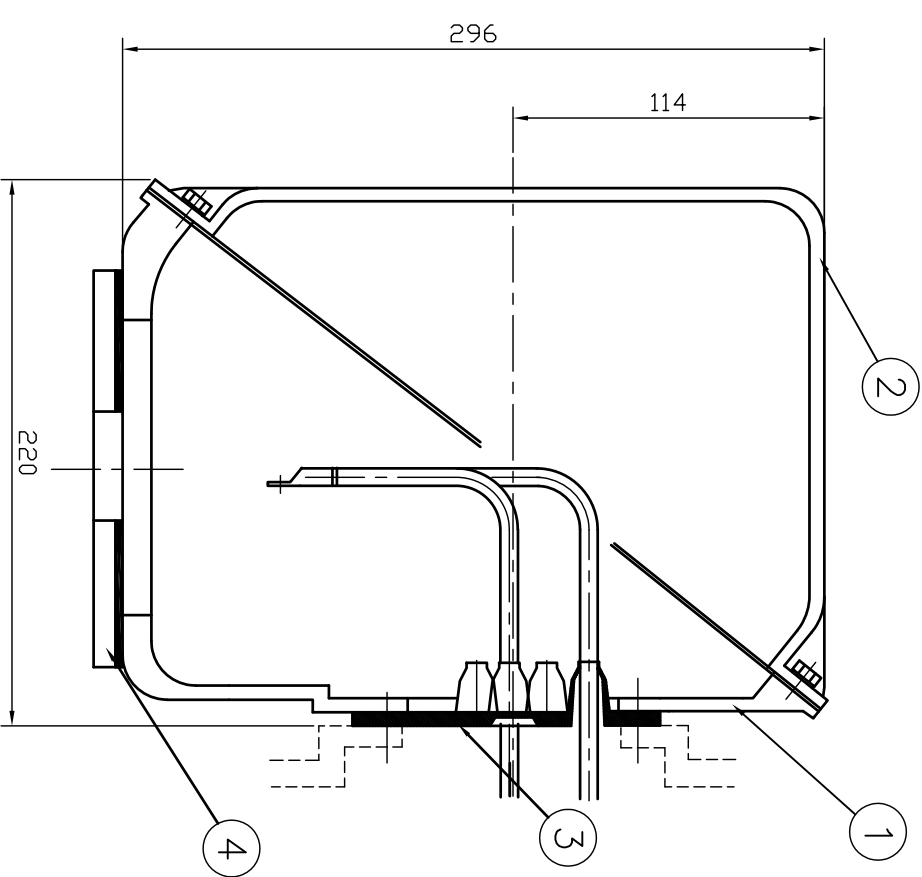
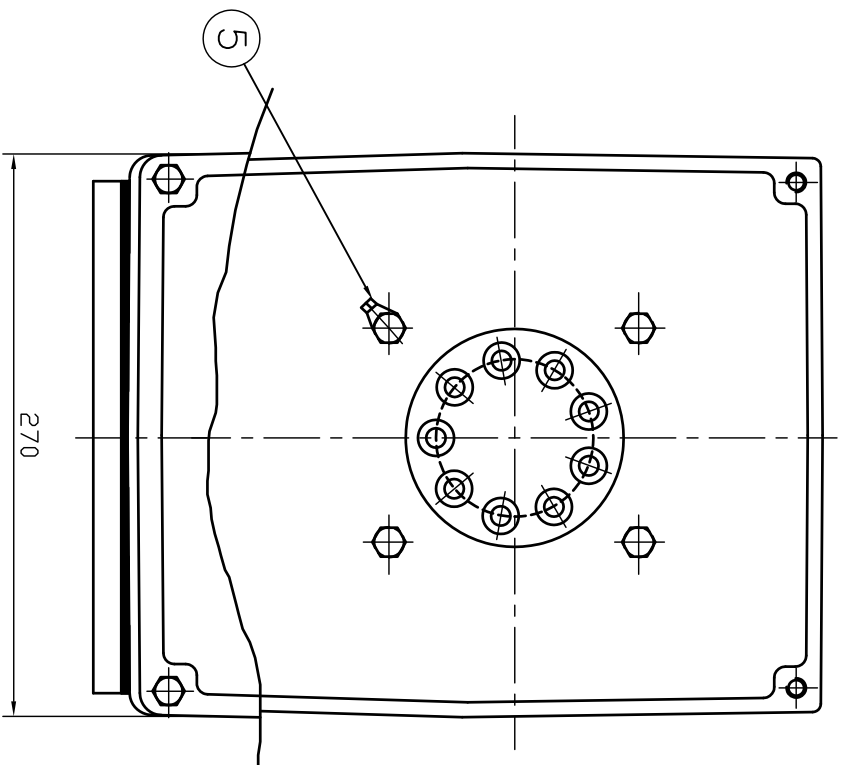
2.The type (1)-"TNB , TDB" is for HHI's standard products and it can be changed for customer's requirements or detail designing.



VIEW "A"
SCALE 4/1

				TEFC STANDARD	
APPD BY	KANG K.J.	UNIT	MM	SUBJECT	KS Fr.250S-2P TEFC
CHKD BY	KIM O.J.	SCALE	1/15	CAD PROJ \ FILE	
CHKD BY	LEE N.D.	PROJEC'N	3rd Angle	MMSTDMTR/TJ5SAC51	
DSND BY	KIM RYANG GYU	DATE	2007.03.23	TITLE	
 HYUNDAI HEAVY INDUSTRIES CO., LTD. INDUSTRIAL & POWER SYSTEMS				OUTLINE	
				THREE-PHASE INDUCTION MOTOR	
				REF. NO	L2-Series
				DWG NO	LM-T1251B3CL001
				Sheet No.	of
				Revision No.	0

G
F
E
D
C
B
A



REV	DATE	CONTENTS	REV'D BY	CHK'D BY	Q.P. CHK	APP'D BY
1						

1	EARTH TERMINAL LUG					5
1	CABLE ENTRY PLATE					4
1	GASKET	NBR				3
1	TERMINAL BOX COVER	CAST IRON				2
1	TERMINAL BOX BODY	CAST IRON				1
QTY	DESCRIPTION	MATERIAL	DIMENSION	WEIGHT	PART NO.	REMARK NO.
APP'D BY	김진오	UNIT	MM	SUBJECT	HLA6 - 250,280Fr.	CAD PROJ. & FILE & T-BOX-M \ 38016882
Q.P. CHK	주영걸	SCALE	NONE	TITLE	(CAST IRON)	
CHK'D BY	권오철	PROJEC'T	3 & 4 (3rd Angle)	TERMINAL BOX ASS'Y		
DSND BY	김헌태	DATE	92.06.05	REF. NO		Sheet No. of
				DWG NO	3M-016882	Revision No.

