

AC INDUCTION MOTOR DATA SHEET

Model No.or RFQ No.		Item No.		Rev. No. [0]			
Project Name		Project No.		Quantity sets			
GENERAL SPECIFICATION			PERFORMANCE DATA				
Frame Size	250M		Rated Output	75 kW 100 HP			
Type	HLP-75/6		Number of Poles	6			
Enclosure(Protection)	Totally Enclosed (IP55)		Rotor Type	Squirrel Cage			
Method of Cooling	IC411(FC)		Starting Method*	<input checked="" type="checkbox"/> D.O.L <input type="checkbox"/> Y- Δ			
Rated Frequency	60 Hz		Rated Voltage	440 V 380 V 220 V			
Number of Phases	3		Current	Full Load	123.3 A 142.8 A 246.6 A		
Insulation Class	<input checked="" type="checkbox"/> F <input type="checkbox"/> B <input type="checkbox"/> H		Locked-rotor**	740 % 740 % 740 %			
Temp. Rise at full load (by resistance method)			Efficiency				
at 1.0 S.F 80 deg. C			50% Load 94.9 %				
Motor Location <input checked="" type="checkbox"/> Indoor <input type="checkbox"/> Outdoor			75% Load 95.2 %				
Altitude Less than 1000 meter			100% Load 95.0 %				
Relative Humidity Less than 80 %			Power Factor(p.u)				
Ambient Temp. 40 deg. C (Max.)			50% Load 0.732				
Duty Type Continuous (S1)			75% Load 0.811				
Service Factor 1.15			100% Load 0.840				
Mounting	<input checked="" type="checkbox"/> B3 <input type="checkbox"/> B5 <input type="checkbox"/> V1 <input type="checkbox"/> B3/B5		Speed at Full Load	1185 r.p.m			
Bearing	Type	Anti-Friction	Torque				
	DE/N-DE	6316C3 / 6313C3	Full Load 61.6 kg·m				
	Lubricant	Grease(Gadus S2 V 100 2)	Locked-rotor** 150 %				
External Thrust		Not applicable	Breakdown** 230 %				
Coupling Method		<input checked="" type="checkbox"/> Direct <input type="checkbox"/> V-Belt	Moment of Inertia (J)				
Shaft Extension		<input checked="" type="checkbox"/> Single <input type="checkbox"/> Double	Load(Max.) 126.780 kg·m²				
Terminal Box	Main	<input type="checkbox"/> Steel <input checked="" type="checkbox"/> Cast Iron	Motor 2.758 kg·m²				
	Aux.	<input type="checkbox"/> Yes <input checked="" type="checkbox"/> No	Sound Pressure Level (No-load & mean value at 1m from motor)				
	Location	Refer to Outline Drawing	75 dB(A)				
Application			Vibration 2.2 mm/sec (r.m.s)				
Area classification		Non-Hazardous	Permissible number of consecutive starts				
Type of Ex-Protection		Not applicable	Cold 3 times				
Applicable Standard		KS,IEC, NEMA MG1 Part30(Vpeak)	Hot 2 times				
			Paint	Munsell No.	4.4PB5.5/5.6(VL-451)		
ACCESSORIES			SUBMITTAL DRAWING				
			Outline Dimension Drawing \ Motor Weight(Approx.)				
			B3	LM-T1253B3PL001	550 kg		
			B5	LM-T1250B5PL001	590 kg		
			V1	LM-T1250V1PL001	590 kg		
			B3/B5	LM-T1253B4PL001	570 kg		
			Main T-Box Ass'y			3M-016882	
SPARE PARTS			REMARK				
			Premium Efficiency				
			*. For use on PWM VFD 10:1VT, 3:1CT@1.0S.F&F Temp. rise				
			Date	DSND	CHKD	CHKD	APPD
			2015-09-05	R.G. KIM	-	O.J. KIM	S.H. GO

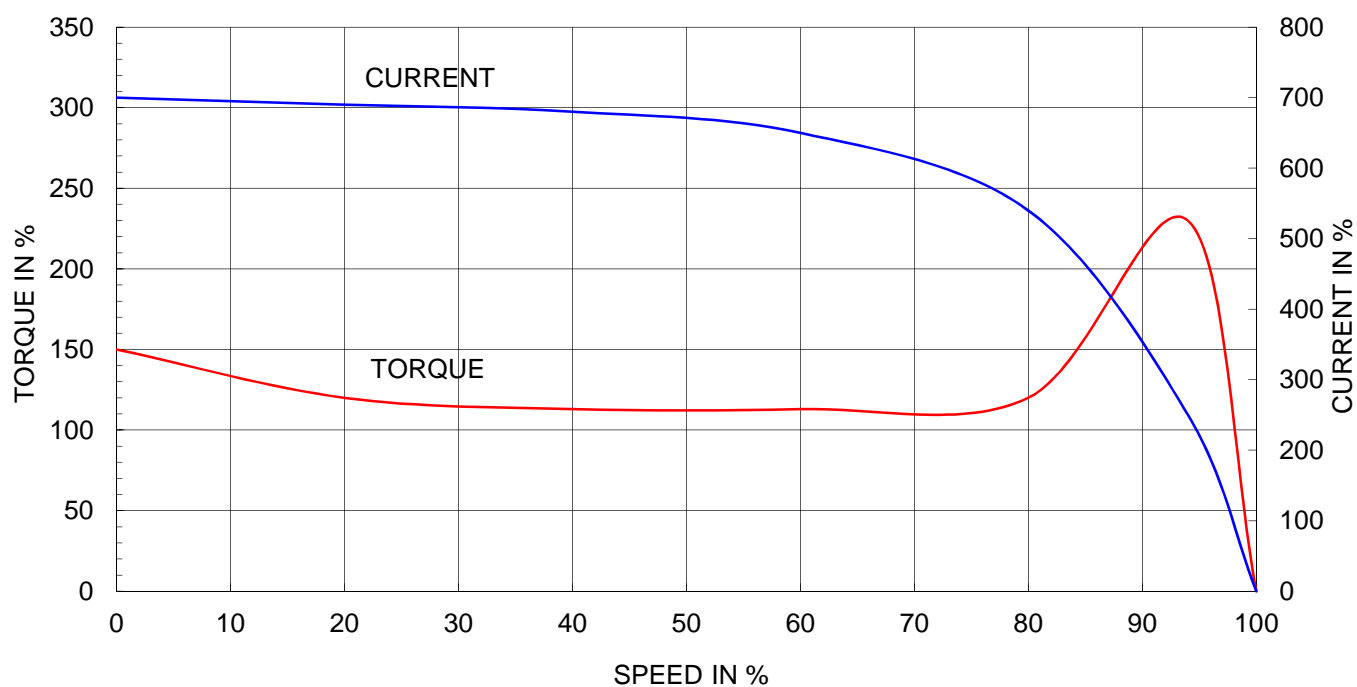
Note: Others not mentioned in this data sheet shall be in accordance with maker standard.
 Above technical data are only design values and shall be guaranteed with tolerance of applicable standard.
 Inspection and performance test shall be maker standard, if not mentioned.
 * In case of Inverter-Fed Motor, performance data is based on sine wave tests.
 ** Data is based on when the motor is supplied at rated voltage & frequency, and the data is expressed as a percentage of full-load value.

HHI W230-131-1 * In case of Inverter or V.V.V.F Motor:Performance data is based on sine wave tests. A4(210mm X 297mm)

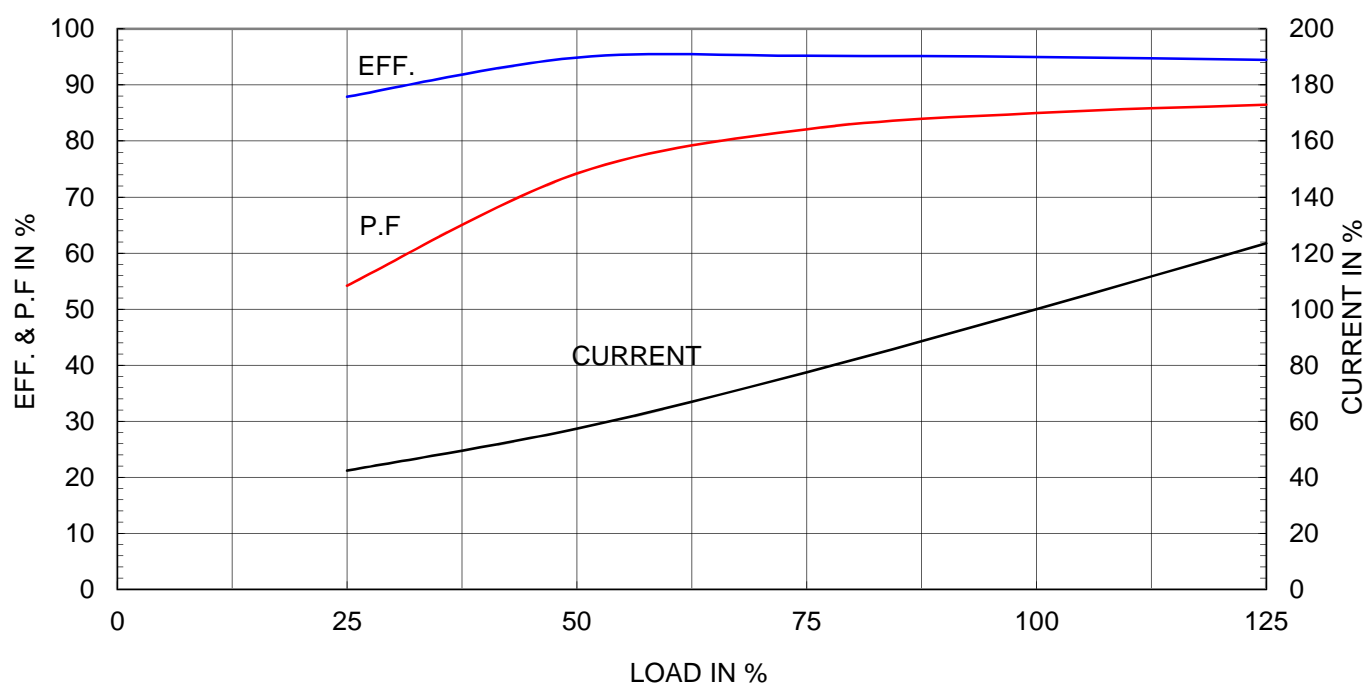
Type	:	HLP-75/6
Full Load Torque	:	61.6 Kg.m
Motor moment of Inertia (J)	:	2.758 Kg.m ²
Load moment of Inertia (J)	:	126.780 Kg.m ²


75 kW		6 P		60 Hz	
Speed at Full Load :				1185 RPM	
Rated Voltage	440V	380V	220V		
Full Load Current	121.9A	141.1A	243.7A		

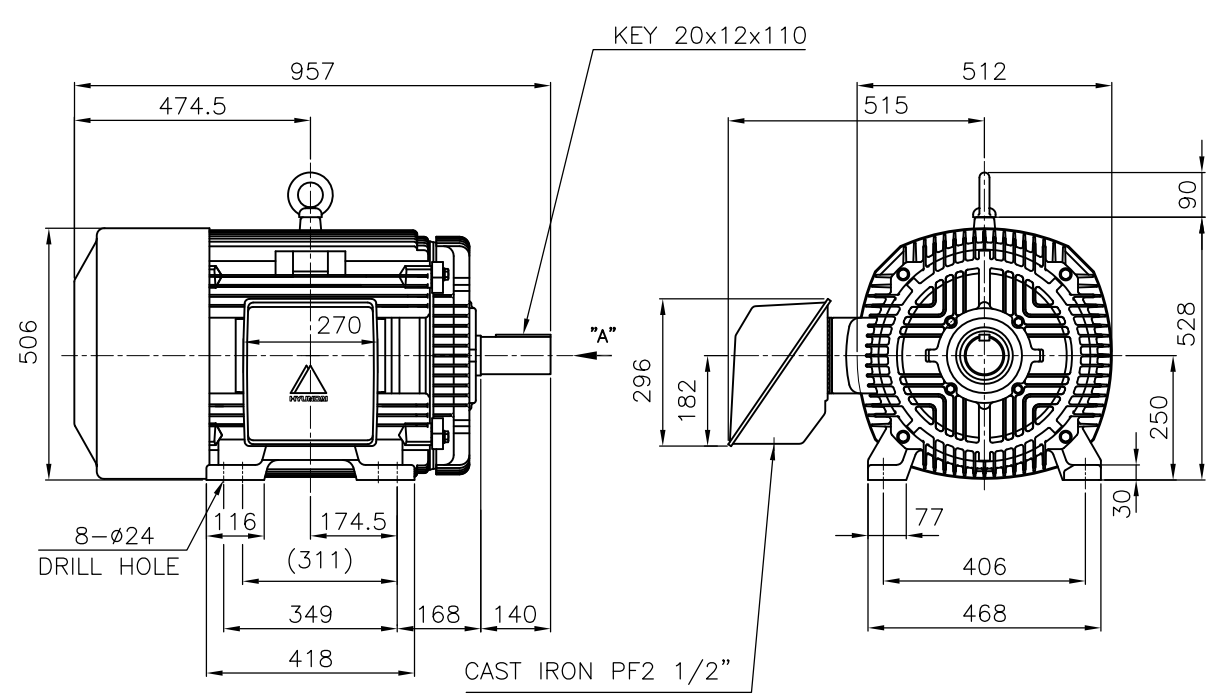
SPEED VS TORQUE & CURRENT CURVE



OUTPUT VS EFF., P.F & CURRENT CURVE



1	2	3	4
 HYUNDAI HEAVY INDUSTRIES CO., LTD.		TEFC THREE PHASE INDUCTION MOTOR	TYPE ⁽¹⁾ TNB , TDB CAST IRON FRAME

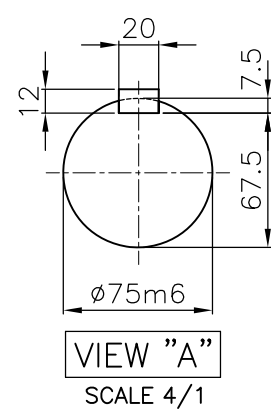



NOTE

1.TOLERANCE :

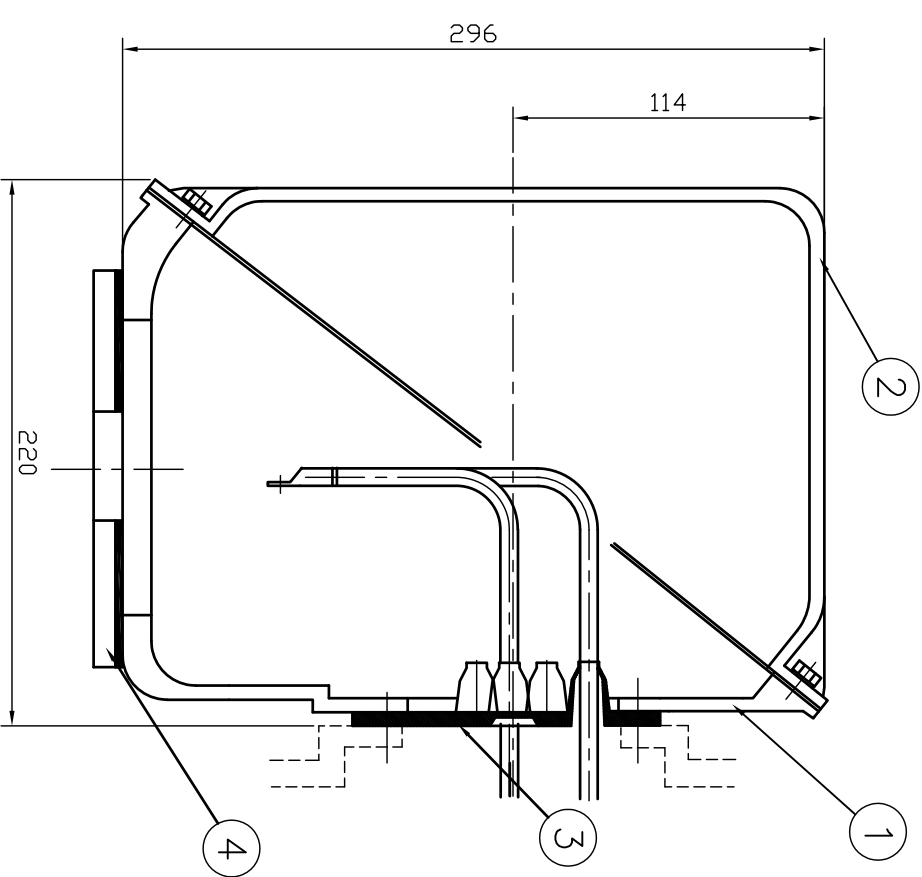
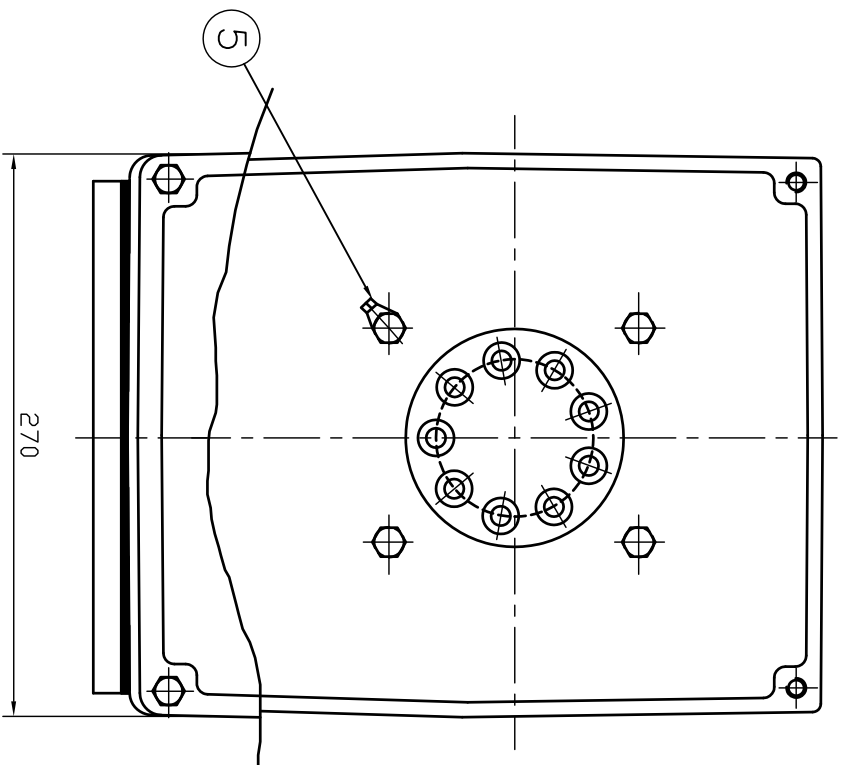
CENTER HEIGHT	250 ⁰ _{-0.5}
BASE HILE	ø24 ^{+0.43} ₀
SHAFT DIAMETER	ø75 ^{+0.030} _{+0.011}
KEYWAY WIDTH	20 ^{-0.022} _{-0.074}
KEYWAY DEPTH	7.5 ^{+0.2} ₀
KEY WIDTH	20 ⁰ _{-0.052}
KEY HEIGHT	12 ⁰ _{-0.110}

2.The type (1)-"TNB , TDB" is for HHI's standard products and it can be changed for customer's requirements or detail designing.



				TEFC STANDARD	
APPD BY	KANG K.J.	UNIT	MM	SUBJECT	KS Fr.250M-4P TEFC
CHKD BY	KIM O.J.	SCALE	1/15	TITLE	CAD PROJ \ FILE
CHKD BY	LEE N.D.	PROJEC'N	3rd Angle		MMSTD MTR/TJ5MAP51
DSND BY	KIM RYANG GYU	DATE	2007.03.23		
 HYUNDAI HEAVY INDUSTRIES CO., LTD. INDUSTRIAL & POWER SYSTEMS				OUTLINE	
				THREE-PHASE INDUCTION MOTOR	
				REF. NO	L2-Series
				DWG NO	LM-T1253B3PL001
				Sheet No.	of
				Revision No.	0

G
F
E
D
C
B
A



REV	DATE	CONTENTS	REV'D BY	CHK'D BY	Q.P. CHK	APP'D BY
1						

1	EARTH TERMINAL LUG					5
1	CABLE ENTRY PLATE					4
1	GASKET	NBR				3
1	TERMINAL BOX COVER	CAST IRON				2
1	TERMINAL BOX BODY	CAST IRON				1
Q'TY	DESCRIPTION	MATERIAL	DIMENSION	WEIGHT	PART NO.	REMARK
APP'D BY	김진오	UNIT	MM	SUBJECT	HLA6 - 250,280Fr.	CAD PROJ. & FILE
Q.P. CHK	주영걸	SCALE	NONE	TITLE	(CAST IRON)	T-BOX-M \ 38016882
CHK'D BY	권오철	PROJEC'T	3 권(3rd Angle)	TERMINAL BOX ASS'Y		
DSND BY	김헌태	DATE	92.06.05	REF. NO		Sheet No. of
				DWG NO	3M-016882	Revision No.

