

Customer :
Project Name :
Project No. :
Revision No. :

SPECIFICATION for INDUCTION MOTOR



Contents

- | | |
|--------------------------------------|-----------|
| 1 . Data Sheet of AC Induction Motor | - 1Sheets |
| 2 . Speed-Torque & Current Curve | - 1Sheets |
| 3 . Outline Dimension Drawing | - 1Sheets |
| 4 . Main Terminal Box Drawing | - 1Sheets |

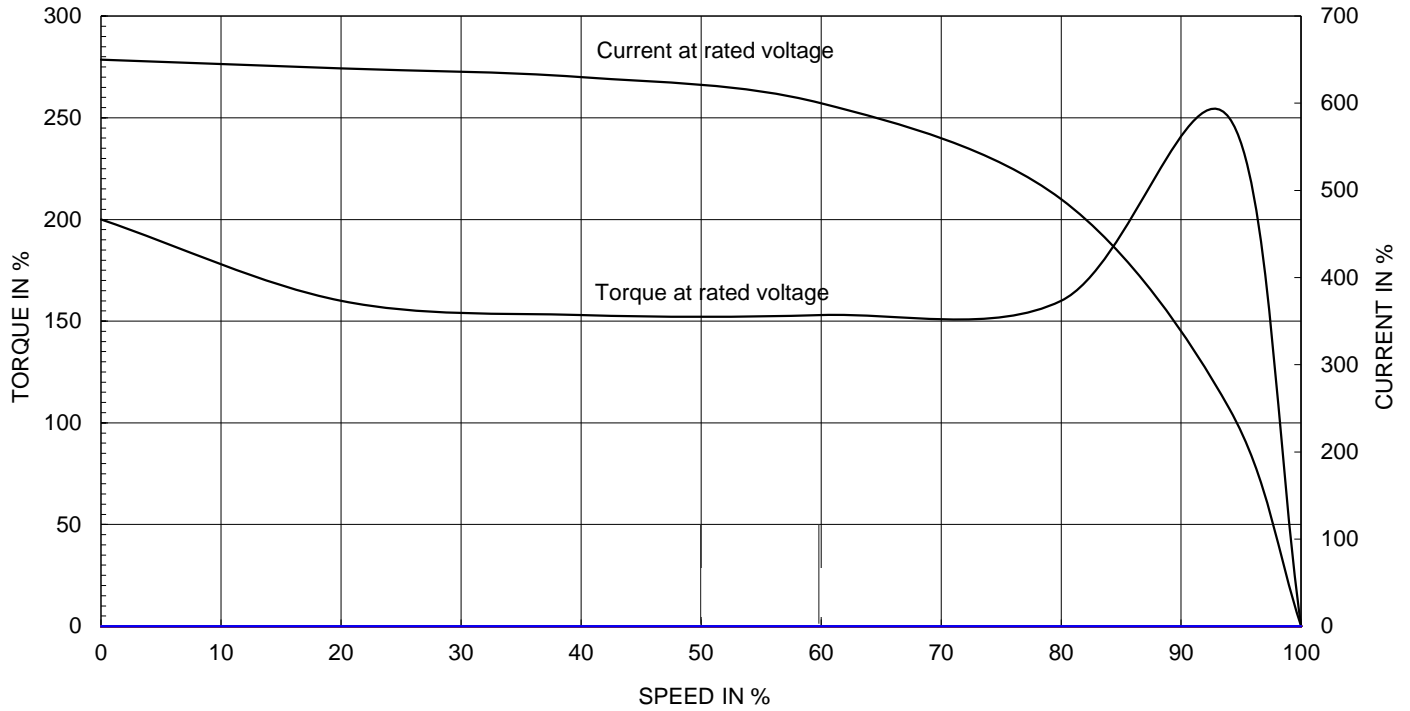
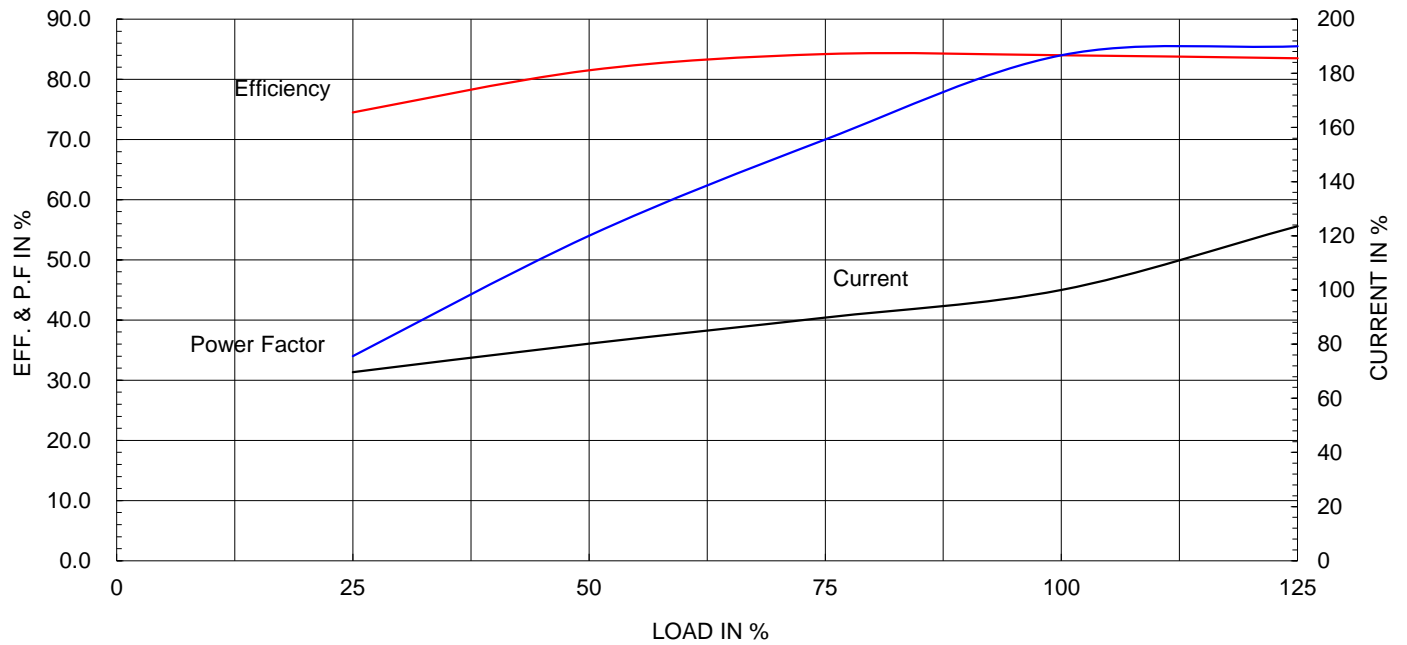
AC INDUCTION MOTOR DATA SHEET

Model No.or RFQ No.	4406KSTD40SSDS1STFE3B31DL0SDS	Item No.		Rev. No.	[]		
Project Name		Project No.		Quantity			
GENERAL SPECIFICATION			PERFORMANCE DATA				
Frame Size	90L	Rated Output	1.1 kW	2 HP			
Type	HLP	Number of Poles	2				
Enclosure(Protection)	Totally Enclosed (IP55)	Rotor Type	Squirrel Cage				
Method of Cooling	IC411(FC)	Starting Method*	<input checked="" type="checkbox"/> D.O.L	<input type="checkbox"/> Y-Δ			
Rated Frequency	60 Hz	Rated Voltage	440 V				
Number of Phases	3	Current	Full Load	2.1 A			
Insulation Class	<input checked="" type="checkbox"/> F <input type="checkbox"/> B <input type="checkbox"/> H		Locked-rotor**	1000 %			
Temp. Rise at full load (by resistance method)		Efficiency					
at 1.0 S.F	80 deg. C						
Motor Location	<input checked="" type="checkbox"/> Indoor <input type="checkbox"/> Outdoor						
Altitude	Less than 1000	50% Load		81.5 %			
Relative Humidity	Less than 80 %	75% Load		84.2 %			
Ambient Temp.	40 deg. C (Max.)	100% Load		84.0 %			
Duty Type	Continuous(S1)	Power Factor(p.u)					
Service Factor	1.15						
Mounting	<input checked="" type="checkbox"/> B3 <input type="checkbox"/> B5 <input type="checkbox"/> V1 <input type="checkbox"/> B3/B5						
Bearing	Type	Anti-Friction					
	DE/N-DE	6205ZZC3 / 6204ZZC3					
	Lubricant	Grease(SML4)					
External Thrust	Not applicable						
Coupling Method	<input checked="" type="checkbox"/> Direct <input type="checkbox"/> V-Belt	Moment of Inertia (J)					
Shaft Extension	<input checked="" type="checkbox"/> Single <input type="checkbox"/> Double						
Terminal Box	Main					<input type="checkbox"/> Steel <input checked="" type="checkbox"/> Cast Iron	
	Aux.	<input type="checkbox"/> Yes <input checked="" type="checkbox"/> No					
	Location	Refer to Outline Drawing					
Application		Sound Pressure Level (No-load & mean value at 1m from motor)					
Area classification	Non-Hazardous						
Type of Ex-Protection	Not applicable						
Applicable Standard	KS,IEC, NEMA MG1 Part30(Vpeak)	Vibration					
						2.2 mm/sec (r.m.s)	
						Permissible number of consecutive starts	
		Paint	Munsell No.	4.4PB5.5/5.6(VL-451)			
ACCESSORIES			SUBMITTAL DRAWING				
			Outline Dimension Drawing		Motor Weight(Approx.)		
			B3	LM-T1095B3PL001	24 kg		
			Main T-Box Ass'y		3M-148548		
REMARK							
* Premium Efficiency * For use on PWM VFD 10:1VT, 3:1CT@1.0S.F&F Temp. rise							
SPARE PARTS							
		Date	DSND	CHKD	CHKD	APPD	
		2011-09-01	R.G. KIM	O.J. KIM	J.H. KIM	K.J. KANG	

Note: Others not mentioned in this data sheet shall be in accordance with maker standard.
 Above technical data are only design values and shall be guaranteed with tolerance of applicable standard.
 Inspection and performance test shall be maker standard, if not mentioned.
 * In case of Inverter-Fed Motor, performance data is based on sine wave tests.
 ** The data are based on rated voltage & frequency, and data are expressed as a percentage of full load value.

Type :	HLP	
Full Load Torque :	0.3	kg.m
Motor moment of Inertia (J) :	0.001	kg.m ²
Load moment of Inertia (J) :	0.160	kg.m ²

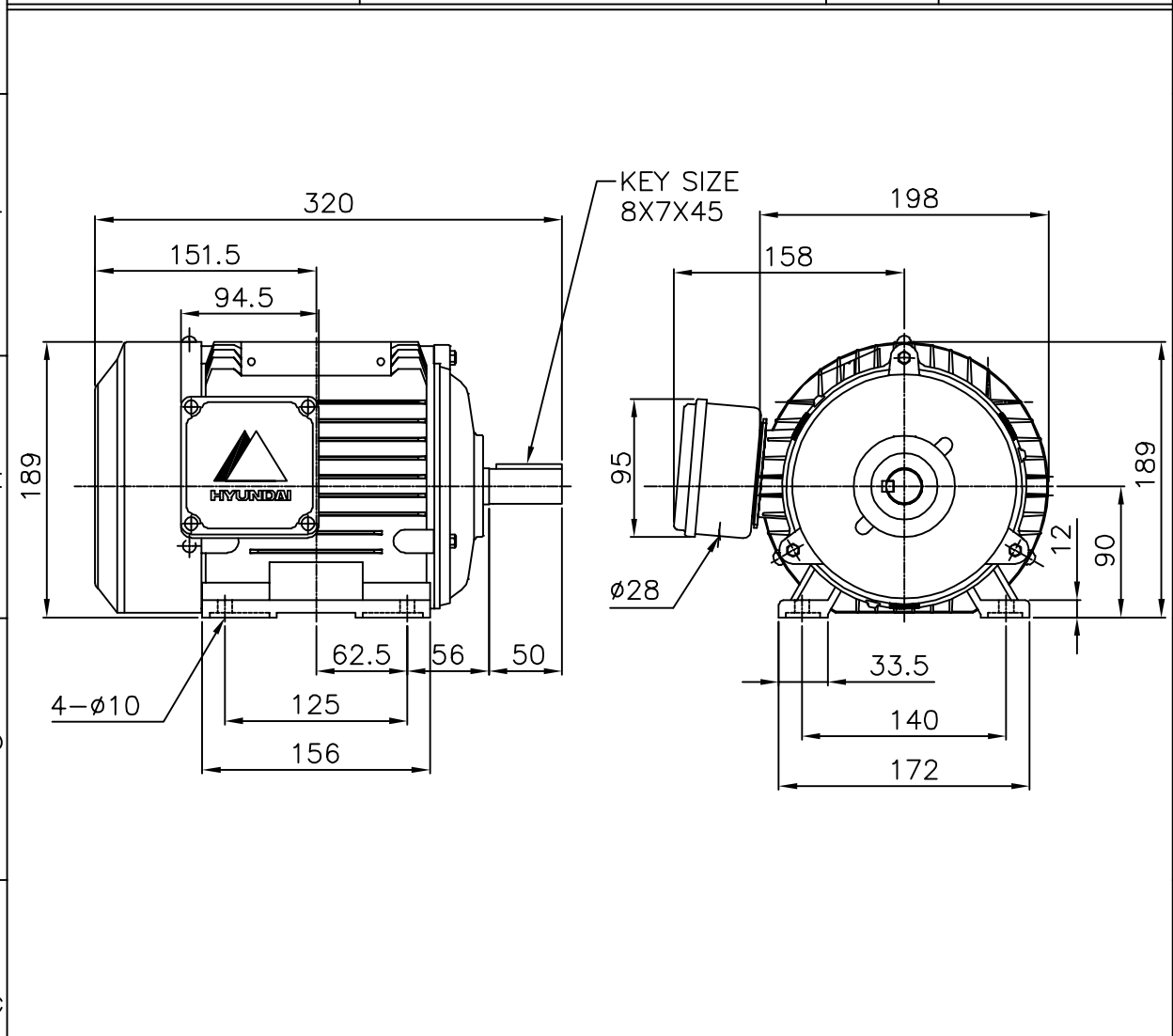
1.1 kW	2 P	60 Hz
Speed at Full Load :		3500 RPM
Rated Voltage	440V	
Full Load Current	2.0A	

SPEED VS TORQUE & CURRENT CURVE

OUTPUT VS EFF., P.F & CURRENT CURVE


THIS DRAWING IS PROPRIETARY TO HHI. NO PART OF THIS DRAWING MAYBE REPRODUCED WITHOUT THE PERMISSION OF HHI.

본 도면은 현대중공업(주) 재산이므로 허가없이 복사할 수 없음 (취급유의)

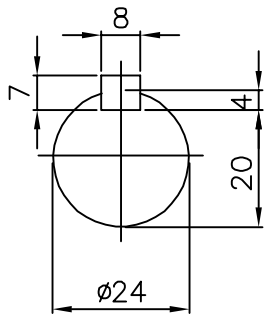
HYUNDAI HEAVY INDUSTRIES CO., LTD.	TEFC	TYPE	HL, HLS
THREE PHASE INDUCTION MOTOR			AL FRAME



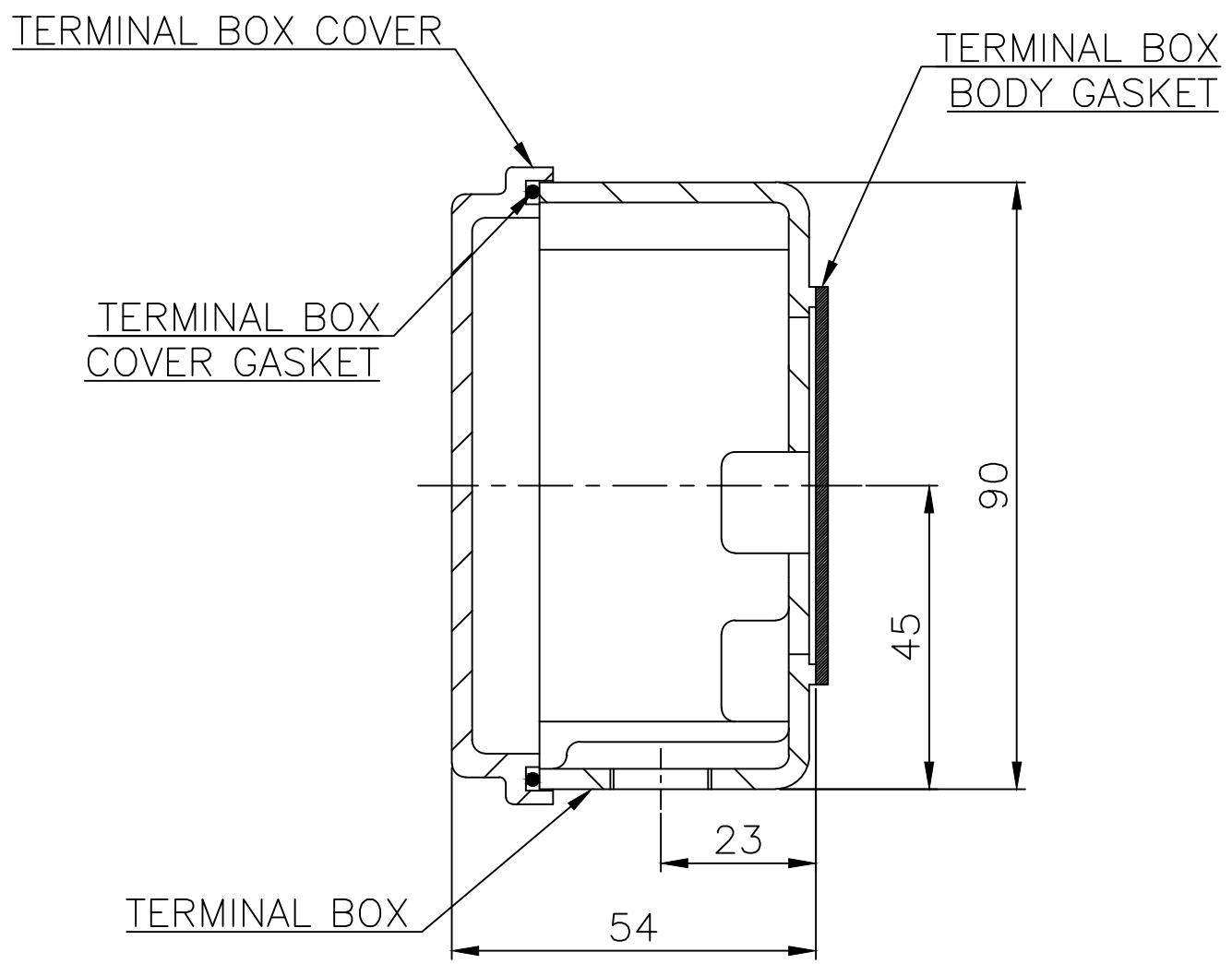
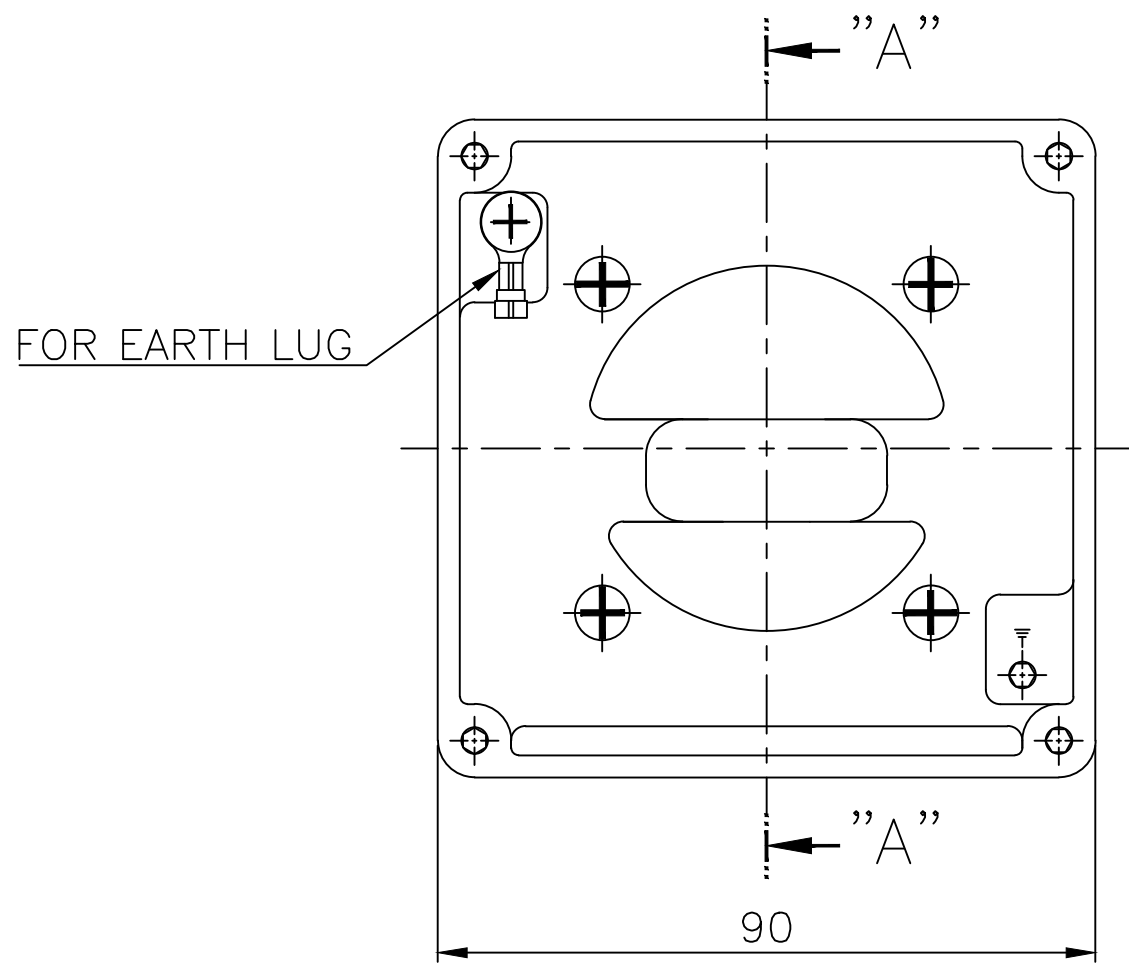
NOTE

1.TOLERANCE :

CENTER HEIGHT	90	$\begin{matrix} +0 \\ -0.5 \end{matrix}$
BASE HOLES	$\phi 10$	$\begin{matrix} +0.36 \\ -0 \end{matrix}$
SHAFT DIAMETER	$\phi 24$	$\begin{matrix} +0.009 \\ -0.004 \end{matrix}$
KEYWAY WIDTH	8	$\begin{matrix} +0 \\ -0.036 \end{matrix}$
KEYWAY DEPTH	20	$\begin{matrix} +0 \\ -0.2 \end{matrix}$



Q'TY	DESCRIPTION	MATERIAL	DIMENSION	WEIGHT	PART NO.	CONDENSER BOX	NO.
APPD BY	J. H. KIM	UNIT	mm	SUBJECT	KS 90L		DWG SIZE
CHKD BY	Y. S. KIM	SCALE		TITLE			A4 ()
CHKD BY	S. H. KO	PROJEC'N	3각법 (3rd Angle)				
DSND BY	I. K. KIM	DATE	2011-10-22	Outline			
HYUNDAI HEAVY INDUSTRIES CO., LTD.				REF. NO	227B5000TA03	Sheet No.	of
				DWG NO	LM-T1095B3PL001	Revision No.	0



SEC. "A" - "A"

▽	50S
▽▽	12.5S
▽▽▽	3.2S
▽▽▽▽	0.4S

REV	DATE	CONTENTS	REVD BY	CHKD BY	CHKD BY	APPD BY

일반가공공차		일반계관공차	
1-4	±0.1	6-30	±0.5
4-18	±0.2	30-120	±0.8
18-63	±0.3	120-315	±1.2
63-250	±0.5	315-1000	±2.0
250-	±0.8	1000-	±3.0

Q'TY	DESCRIPTION	MATERIAL	DIMENSION	WEIGHT	PART NO.	REMARK	NO.
APPD BY	S.K.HAN	UNIT	mm	SUBJECT	FR.71~90 (AL)	DWG SIZE	A3 (1:1)
CHKD BY	S.Y.KIM	SCALE	1/1	TITLE			
CHKD BY	R.G.KIM	PROJEC'N	3각법(3rd Angle)	Terminal Box Arrangement			
DSND BY	이혜경R	DATE	2011-10-26	REF. NO	227B1537AA	Sheet No.	of
				DWG NO	3M-148548	Revision No.	2