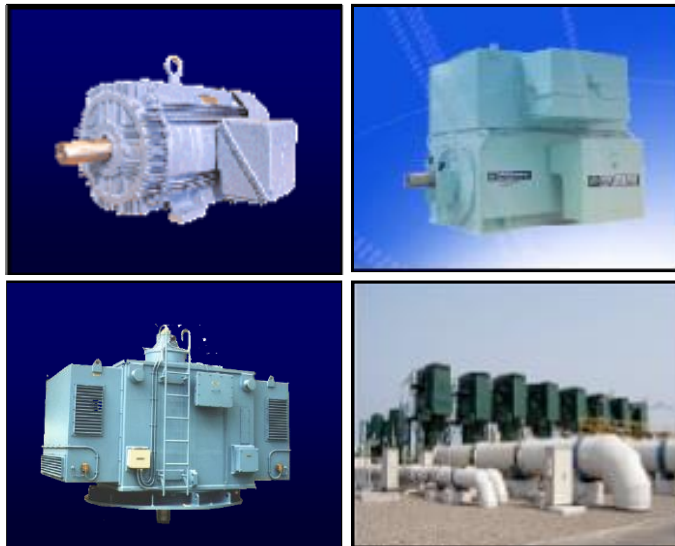


Customer :
Project Name :
Project No. :
Revision No. :

SPECIFICATION for INDUCTION MOTOR



Contents

- | | |
|--------------------------------------|-----------|
| 1 . Data Sheet of AC Induction Motor | - 1Sheets |
| 2 . Speed-Torque & Current Curve | - 1Sheets |
| 3 . Outline Dimension Drawing | - 1Sheets |
| 4 . Main Terminal Box Drawing | - 1Sheets |

AC INDUCTION MOTOR DATA SHEET

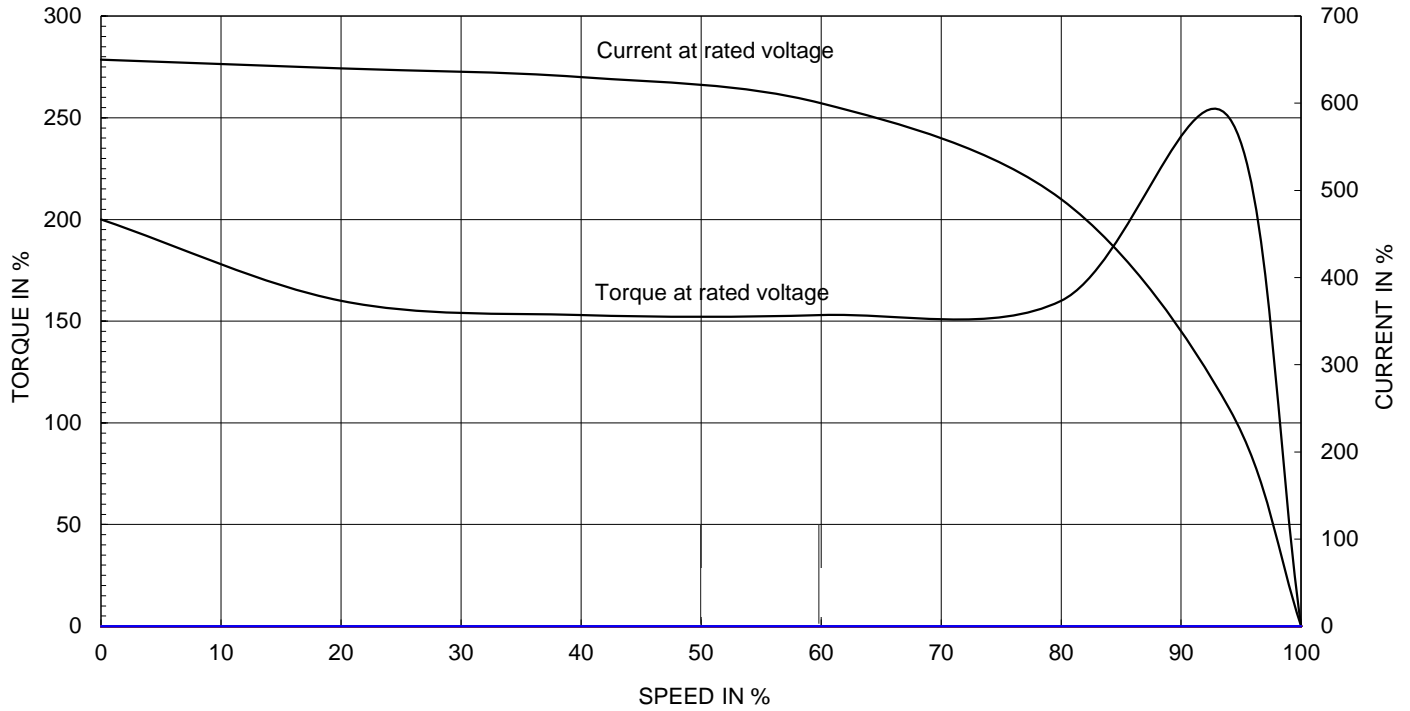
Model No.or RFQ No.	4406KSTD40SSDS1STFE3B51DL0SDS	Item No.		Rev. No.	[]	
Project Name		Project No.		Quantity		
GENERAL SPECIFICATION			PERFORMANCE DATA			
Frame Size	90L	Rated Output	1.1 kW	2 HP		
Type	HLP	Number of Poles	4			
Enclosure(Protection)	Totally Enclosed (IP55)	Rotor Type	Squirrel Cage			
Method of Cooling	IC411(FC)	Starting Method*	<input checked="" type="checkbox"/> D.O.L	<input type="checkbox"/> Y-Δ		
Rated Frequency	60 Hz	Rated Voltage	440 V			
Number of Phases	3	Current	Full Load	2.3 A		
Insulation Class	<input checked="" type="checkbox"/> F <input type="checkbox"/> B <input type="checkbox"/> H		Locked-rotor**	900 %		
Temp. Rise at full load (by resistance method)		Efficiency				
at 1.0 S.F	80 deg. C					
Motor Location	<input checked="" type="checkbox"/> Indoor <input type="checkbox"/> Outdoor					
Altitude	Less than 1000	100% Load		86.5 %		
Relative Humidity	Less than 80 %	Power Factor(p.u)				
Ambient Temp.	40 deg. C (Max.)					
Duty Type	Continuous(S1)					
Service Factor	1.15	100% Load		0.720		
Mounting	<input type="checkbox"/> B3 <input checked="" type="checkbox"/> B5 <input type="checkbox"/> V1 <input type="checkbox"/> B3/B5	Speed at Full Load		1735 r.p.m		
Bearing	Type	Anti-Friction				
	DE/N-DE	6205ZZC3 / 6204ZZC3				
	Lubricant	Grease(SML4)				
External Thrust	Not applicable					
Coupling Method	<input checked="" type="checkbox"/> Direct <input type="checkbox"/> V-Belt	Moment of Inertia (J)				
Shaft Extension	<input checked="" type="checkbox"/> Single <input type="checkbox"/> Double					
Terminal Box	Main					<input type="checkbox"/> Steel <input checked="" type="checkbox"/> Cast Iron
	Aux.	<input type="checkbox"/> Yes <input checked="" type="checkbox"/> No	Motor		0.003 kg·m ²	
	Location	Refer to Outline Drawing				
Application		Sound Pressure Level (No-load & mean value at 1m from motor)				
Area classification	Non-Hazardous	Vibration		2.2 mm/sec (r.m.s)		
Type of Ex-Protection	Not applicable	Permissible number of consecutive starts		Cold	3 times	
Applicable Standard	KS,IEC, NEMA MG1 Part30(Vpeak)			Hot	2 times	
ACCESSORIES		Paint	Munsell No.	4.4PB5.5/5.6(VL-451)		
		SUBMITTAL DRAWING				
		Outline Dimension Drawing			Motor Weight(Approx.)	
		B5		LM-T1095B5PL001	28 kg	
		Main T-Box Ass'y		3M-148548		
REMARK						
* Premium Efficiency * For use on PWM VFD 10:1VT, 3:1CT@1.0S.F&F Temp. rise						
SPARE PARTS						
		Date	DSND	CHKD	CHKD	APPD
		2011-09-01	R.G. KIM	O.J. KIM	J.H. KIM	K.J. KANG

Note: Others not mentioned in this data sheet shall be in accordance with maker standard.
 Above technical data are only design values and shall be guaranteed with tolerance of applicable standard.
 Inspection and performance test shall be maker standard, if not mentioned.
 * In case of Inverter-Fed Motor, performance data is based on sine wave tests.
 ** The data are based on rated voltage & frequency, and data are expressed as a percentage of full load value.

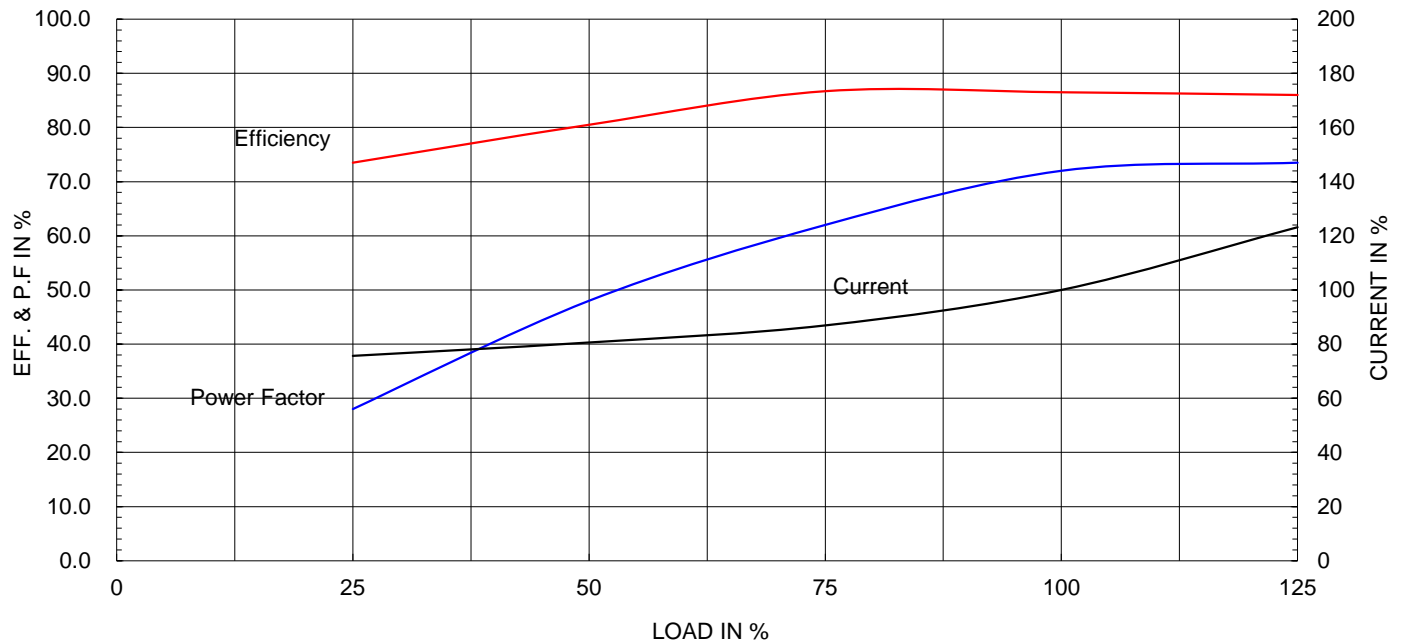
Type :	HLP
Full Load Torque :	0.6 kg.m
Motor moment of Inertia (J) :	0.003 kg.m ²
Load moment of Inertia (J) :	1.023 kg.m ²


1.1 kW	4 P	60 Hz
Speed at Full Load :		1735 RPM
Rated Voltage	440V	
Full Load Current	2.3A	

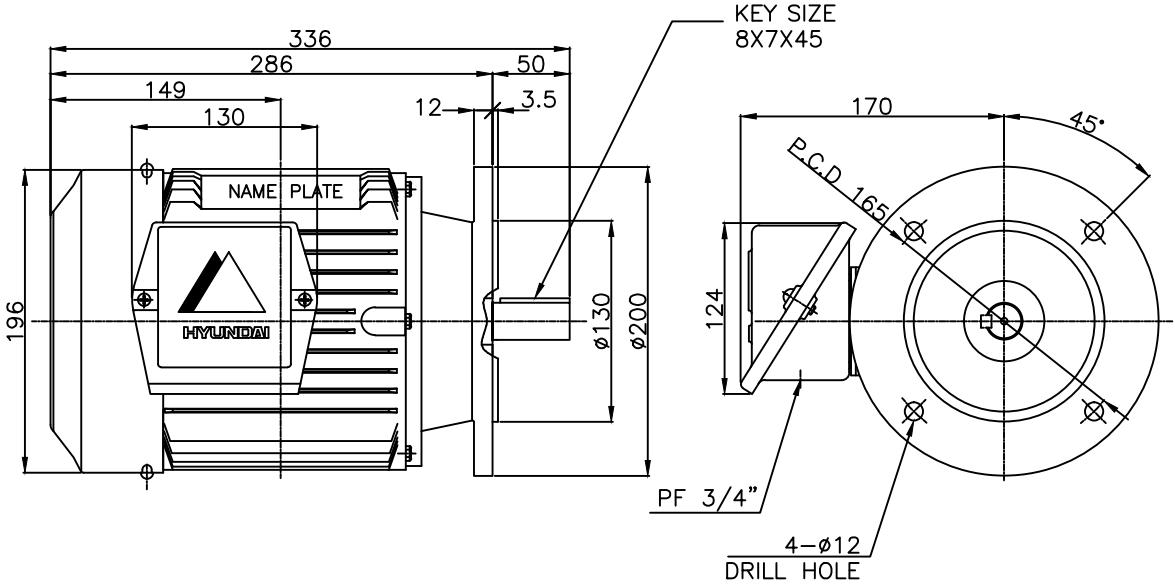
SPEED VS TORQUE & CURRENT CURVE



OUTPUT VS EFF., P.F & CURRENT CURVE



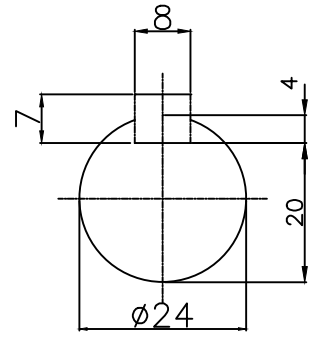
	<h1 style="margin: 0;">TEFC</h1> <h2 style="margin: 0;">THREE PHASE INDUCTION MOTOR</h2>	<h3 style="margin: 0;">TYPE</h3>
		HL AL FRAME




NOTE

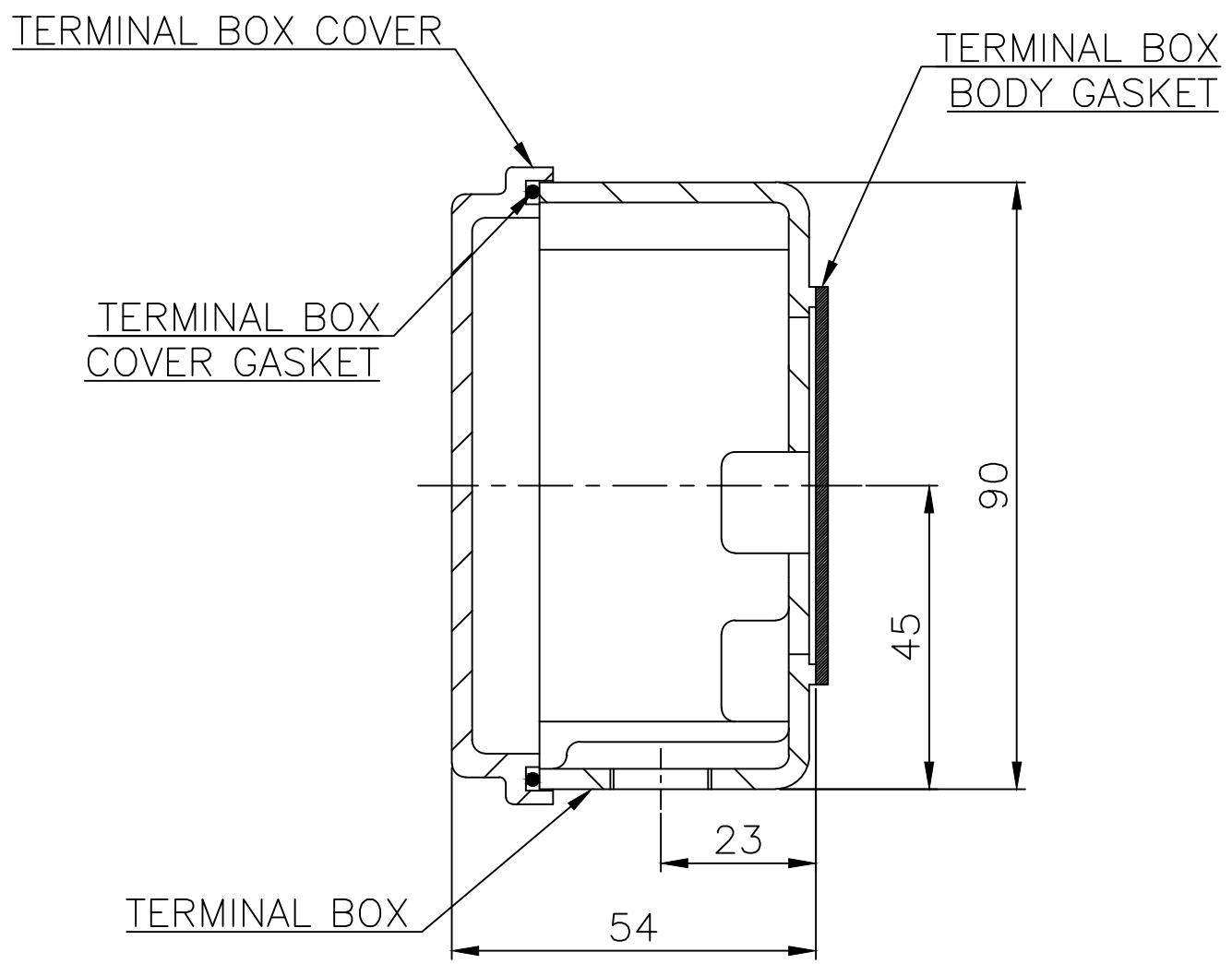
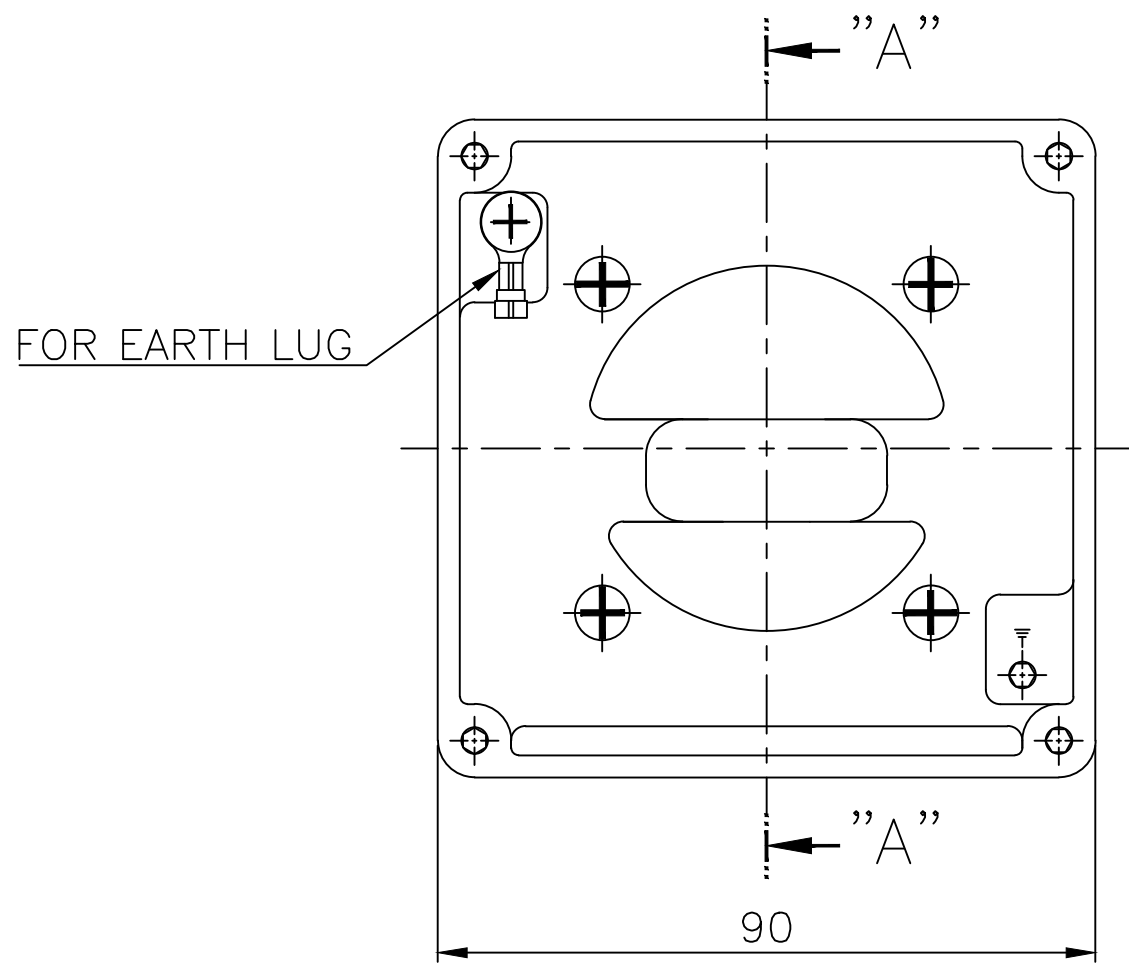
1.TOLERANCE :

FLANGE HOLES	$\phi 12 \begin{smallmatrix} +0.43 \\ -0. \end{smallmatrix}$
RABBET DIAMETER	$\phi 130 \begin{smallmatrix} +0.014 \\ -0.011 \end{smallmatrix}$
SHAFT DIAMETER	$\phi 24 \begin{smallmatrix} +0.009 \\ -0.004 \end{smallmatrix}$
KEYWAY WIDTH	$8 \begin{smallmatrix} +0 \\ -0.036 \end{smallmatrix}$
KEYWAY DEPTH	$4 \begin{smallmatrix} +0.2 \\ -0 \end{smallmatrix}$



* AL CONDUIT BOX

Q'TY	DESCRIPTION	MATERIAL	DIMENSION	WEIGHT	PART NO.	REMARK	NO.
APPD BY	K.J.KANG	UNIT	mm	SUBJECT	FF165, IEC90	DWG SIZE	A4 ()
CHKD BY	J.H.KIM	SCALE	1/0.34	<h2 style="margin: 0;">Outline</h2>			
CHKD BY	O.J.KIM	PROJEC'N	3각법(3rd Angle)				
DSND BY	C.R.LEE	DATE	2011-11-15				
				REF. NO	227B5023TA03	Sheet No.	of
				DWG NO	LM-T1095B5PL001	Revision No.	0



SEC. "A" - "A"

▽	50S
▽▽	12.5S
▽▽▽	3.2S
▽▽▽▽	0.4S

REV	DATE	CONTENTS	REVD BY	CHKD BY	CHKD BY	APPD BY

일반가공공차		일반계관공차	
1-4	±0.1	6-30	±0.5
4-18	±0.2	30-120	±0.8
18-63	±0.3	120-315	±1.2
63-250	±0.5	315-1000	±2.0
250-	±0.8	1000-	±3.0

Q'TY	DESCRIPTION	MATERIAL	DIMENSION	WEIGHT	PART NO.	REMARK	NO.
APPD BY	S.K.HAN	UNIT	mm	SUBJECT	FR.71~90 (AL)	DWG SIZE	A3 (1:1)
CHKD BY	S.Y.KIM	SCALE	1/1	TITLE Terminal Box Arrangement			
CHKD BY	R.G.KIM	PROJEC'N	3각법(3rd Angle)				
DSND BY	이혜경R	DATE	2011-10-26	REF. NO	227B1537AA	Sheet No.	of
				DWG NO	3M-148548	Revision No.	2