

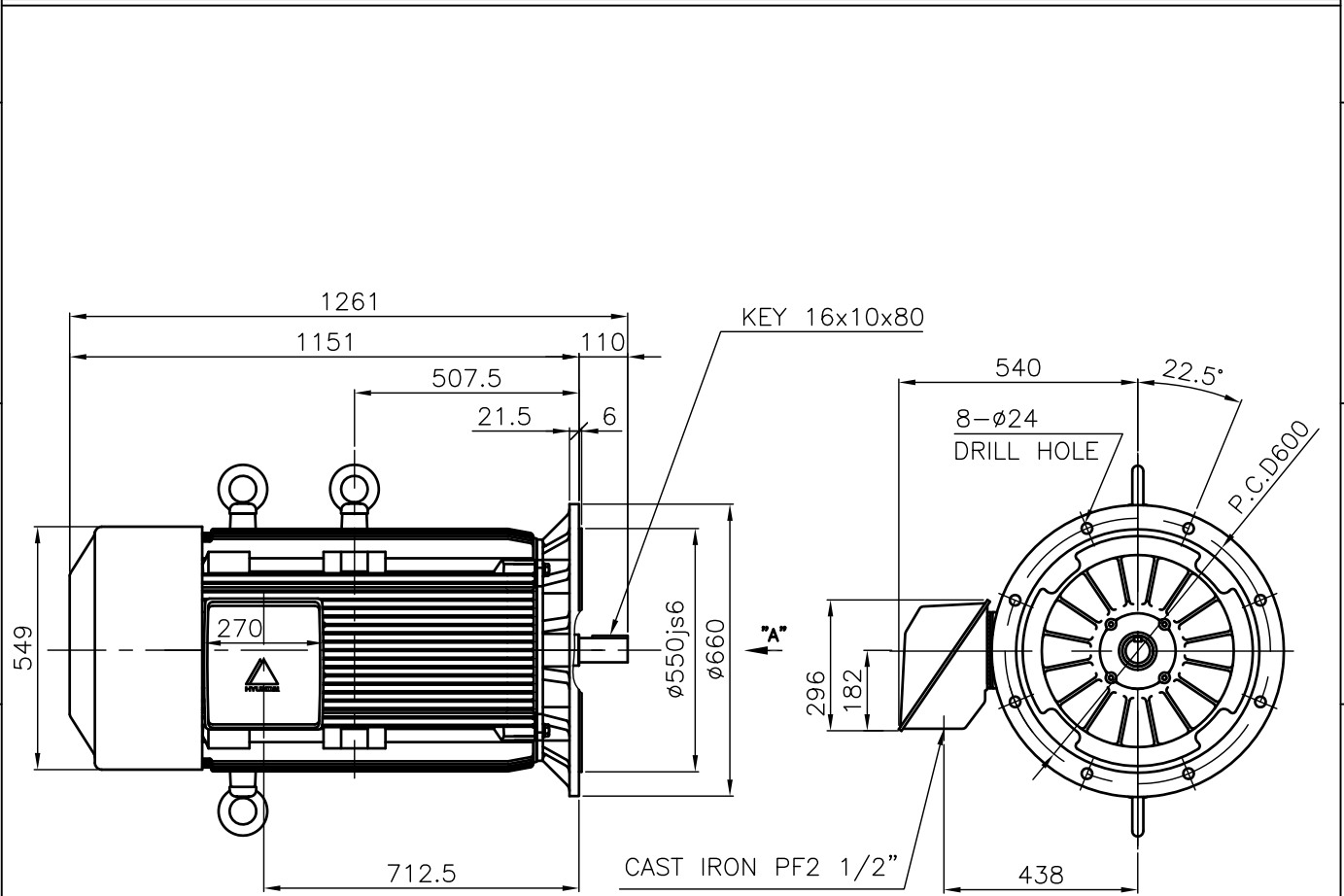
		<b>DATA SHEET</b> <b>of</b> <b>AC INDUCTION MOTOR</b>				<b>268 HP - 2 P</b> <b>TE</b>	
						DESIGN NO : <b>KS C4202-1996</b>	
Model No.or RFQ No.		Item No.		Rev. No.	[ 0 ]		
Project Name		Project No.		Quantity :			
GENERAL SPECIFICATION			PERFORMANCE DATA				
Frame No.	280LL		Output	268 HP      200 KW			
Type	TNB		Poles	2 P			
Enclosure(Protection)	Totally Enclosed (IP IP54 )		Rotor Type	Squirrel Cage			
Cooling Method	IC411(FC)		Starting Method(*)	<input checked="" type="checkbox"/> D.O.L. <input type="checkbox"/> Y-Δ			
Frequency	60 Hz		Rated Voltage	440 V	380 V	220 V	
Phase	3 φ		Current	Rated Load	313.5 A	363.0 A      627.1 A	
Insulation Class	<input checked="" type="checkbox"/> F <input type="checkbox"/> B <input type="checkbox"/> H			Start'g-D.O.L	2,038.0 A	2,359.8 A      4,076.0 A	
Temp. Rise at full load (by resistance method)			Efficiency				
at 1.0 S.F			105 °C				
Location	<input type="checkbox"/> Indoor <input type="checkbox"/> Outdoor		50% Load      92.2 %				
Altitude	Less than 1000 meter		75% Load      92.8 %				
Humidity	Less than 80 %		100% Load      93.0 %				
Ambient Temp.	40 °C (Max.)		Power Factor				
Duty	CONT.(S1)		50% Load      85.0 %				
Service Factor	1.00		75% Load      89.5 %				
Electric Design	NEMA Design B		100% Load      90.0 %				
Construction	<input type="checkbox"/> B3 <input type="checkbox"/> B5 <input type="checkbox"/> V1 <input type="checkbox"/>		Speed at Rated Load      3565 RPM / SLIP      0.97 %				
Bearing	Type	Anti-friction		Torque (D.O.L)			
	DE/ODE	6314C3 \ 6314C3		Rated	54.6 Kg.m	100 %	
	Lubricant	GREASE(ALVANIA#2)		Starting	65.6 Kg.m	120 %	
External Thrust	Not applicable		Break down	120.2 Kg.m	220 %		
Coupling Method	<input checked="" type="checkbox"/> Direct <input type="checkbox"/> V-Belt		Allowable Load GD <sup>2</sup> referred to motor shaft				
Shaft Extension	<input checked="" type="checkbox"/> Single <input type="checkbox"/> Double		68.000 Kg.m <sup>2</sup>				
Terminal Box	Main	<input type="checkbox"/> Steel <input checked="" type="checkbox"/> Cast Iron		Motor GD <sup>2</sup> 9.940 Kg.m <sup>2</sup>			
	Aux.	<input type="checkbox"/> Yes <input checked="" type="checkbox"/> No		Noise Level (dB(A))      98 dB(A) at 1m from motor(No-load)			
	Location	<input checked="" type="checkbox"/> Left <input type="checkbox"/> Right		Vibration(Velocity)      3.8 mm/sec.(peak)			
(Viewed from Drive End)			Starting Duty	Cold 2 times \ Hot 1 time			
			Paint	Munsell No.	4.OPB5.4/5.5(VL-451)		
<b>Application</b>			<b>SUBMITTAL DRAWING</b>				
<b>Area Classification</b>			Outline Dimension Drawing \ Motor Weight(Approx.)				
<b>Applicable Standard</b>			<input type="checkbox"/> B3      TJ8XAC50      1100 Kg <input type="checkbox"/> B5      TJ8XBC50      1130 Kg <input type="checkbox"/> V1      TJ8XPC50      1130 Kg				
Inspection and Performance Test			Main T-Box Ass'y      3M-016882				
HHI Stand.      Maker Test Report							
ACCESSORIES(OPTION ITEM)							
SPARE PARTS			REMARK				
Note: Others not mentioned in this specification shall be in accordance with HHI standard. Above technical data are only design values and shall be guaranteed with tolerance of applicable standard.			Date	DSND	CHKD	CHKD	APPD
			2004.01.27	KIM R.G.		KIM O.J.	KANG K.G.

본 도면은 현대중공업(주) 재산이므로  
허가없이 복사할 수 없음 (취급주의)

THIS DRAWING IS PROPRIETARY TO HHI. NO PART OF THIS DRAWING  
MAYBE REPRODUCED WITHOUT THE PERMISSION OF HHI.

1		2		3		4	
 <b>HYUNDAI</b> HEAVY INDUSTRIES CO., LTD.		<h1>TEFC</h1> <h2>THREE PHASE INDUCTION MOTOR</h2>				<b>TYPE</b> (1) TNB , TDB CAST IRON FRAME	

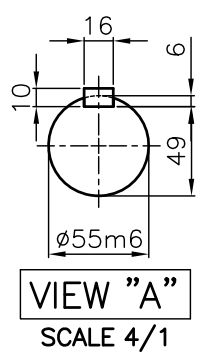



**NOTE**

1.TOLERANCE :

RABBET DIAMETER	ø550js6	±0.022
SHAFT DIAMETER	ø55m6	+0.030 +0.011
KEYWAY WIDTH	16P9	-0.018 -0.061
KEYWAY DEPTH	6	+0.2 0

2.The type (1)-"TNB , TDB" is for HHI's standard products and it can be changed for customer's requirements or detail designing.



APPD BY KANG K.J. UNIT MM				SUBJECT KS Fr.280LL TEFC		TEFC STANDARD	
CHKD BY KIM O.J. SCALE 1/17				TITLE		CAD PROJ \ FILE	
CHKD BY LEE N.D. PROJEC'N 3rd Angle				<b>OUTLINE</b> THREE-PHASE INDUCTION MOTOR			
DSND BY KIM RYANG GYU DATE 2007.03.23							
 <b>HYUNDAI</b> HEAVY INDUSTRIES CO., LTD. INDUSTRIAL & POWER SYSTEMS				REF. NO L3-Series		Sheet No. of	
				DWG NO TJ8XBC50		Revision No. 0	



# HYUNDAI

HEAVY INDUSTRIES CO., LTD

## PERFORMANCE CURVE

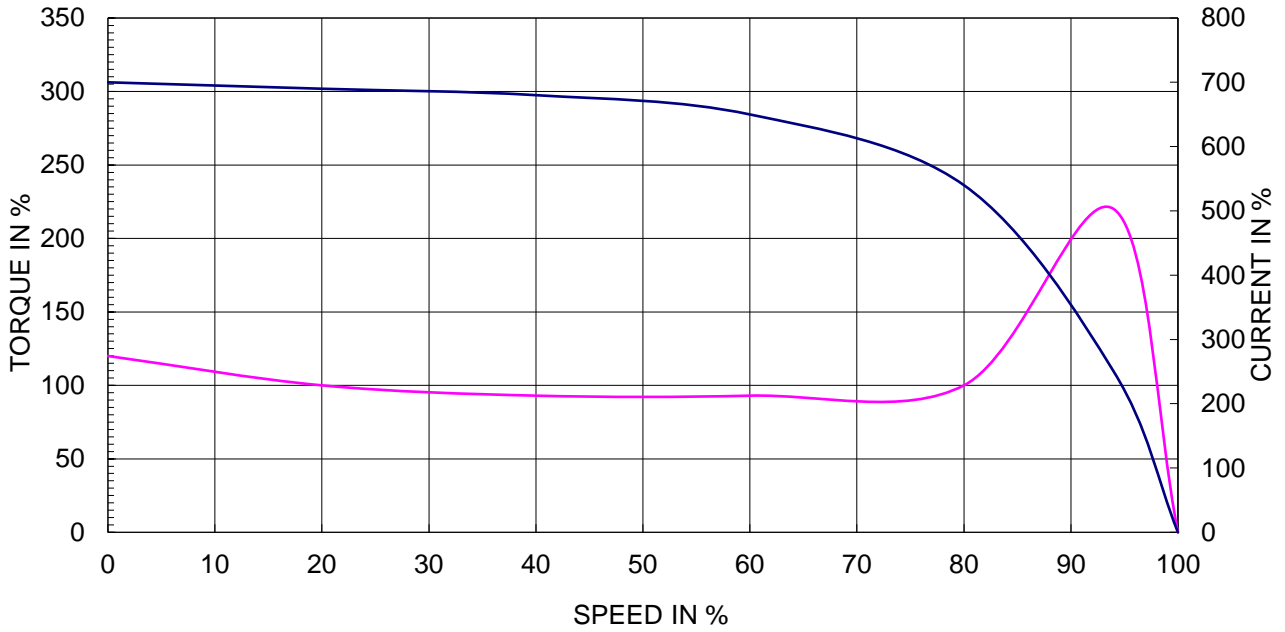
CURVE NO.

**P-TNBJ8X02200**

TYPE :		
RATED TORQUE :	54.6	Kg.m
GD2 OF MOTOR :	9.9	Kg.m <sup>2</sup>
(ALLOWABLE) GD2 OF LOA	68.0	Kg.m <sup>2</sup>

200 kW	2 P	60 Hz	
RATED SPEED :		3565 RPM	
VOLTAGE	440V	380 V	220V
RATED CURRENT	313.5A	363.0 A	627.1A

### SPEED VS TORQUE & CURRENT CURVE



### OUTPUT VS EFF., P.F & CURRENT CURVE

